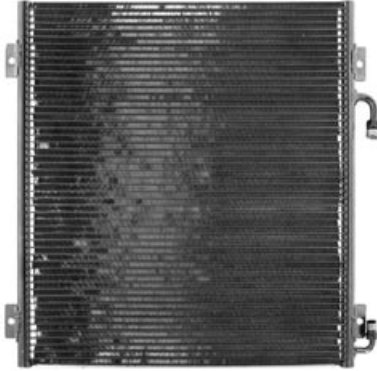


For orders, please contact your nearest Jayair Distributor

**17.3.06**

**CN 5256 JCB Tractor 4CX (Coming Soon)**

Inlet  
#8 MIOR  
Outlet  
#6 MIOR  
Length  
485mm  
Height  
520mm  
Thickness  
20mm

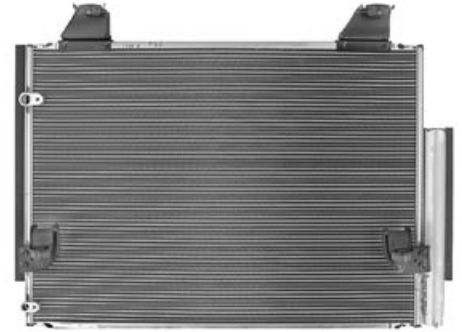


**CN 5450 Toyota Hilux Turbo Diesel**

3.0Lt Chassis Kun

05 >

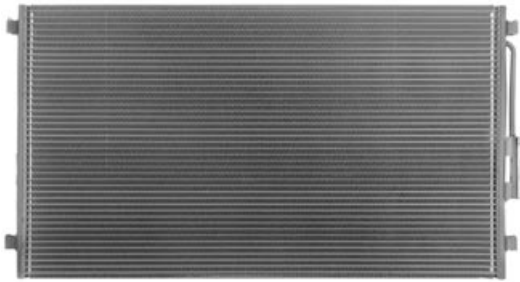
Inlet  
Pad  
Outlet  
Pad  
Length  
645mm  
Height  
460mm  
Thickness  
16mm



**CN 5361 Chrysler Voyager**

01 > 02

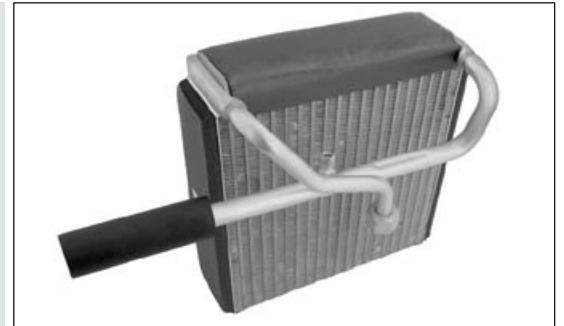
Inlet  
Pad  
Outlet  
Pad  
Length  
780mm  
Height  
438mm  
Thickness  
22mm



**EV 3329 Mazda 323 Protegé**

98 >

Inlet  
M20 FOR  
Outlet  
FSL  
Length  
215mm  
Height  
230mm  
Thickness  
65mm



**EF 6510 Mini Cooper**

1.6Lt OE # 17101475577  
Radiator Assembly

01 > 04



**PS 4655 Jaguar**

OE # LJA7658AA



**SP 2228 Cap End**

Formula Concord  
Suits: EV 2228,2232,2237



**TX 1480**

**TXV Suction Throttling Valve**  
Toyota Soarer



**CM 5427**

**Coaster Bus**  
10P25B Denso



R12

**OR 9322 TX Valve Capillary**

(Thin)  
10 pce

**OR 9322B**

ID	OD	Thick	Material
4.6mm	7.0mm	1.5mm	HNBR



**HO 8303K**

**Nissan Pulsar N15**

2.0LT , Hose Assembly  
Suits Zexel Compressor only



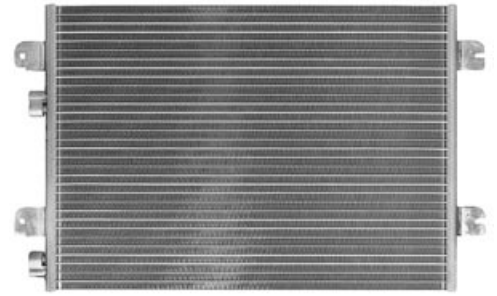
**CN 5581**

**Renault Megane, Privilege Scenic**

OE #8200 182 361

**01 > 03**

Inlet  
Pad  
Outlet  
Pad  
Length  
**570mm**  
Height  
**390mm**  
Thickness  
**16mm**



**CM 7406**

**Isuzu Truck**

TM14A 24v B Vert Pad Head  
**Longbed 950**



**EM 4580**

**Mitsubishi  
Magna TM, TN**

Radiator Fan Motor



**Sanden Valve  
Plate Assembly**

**CP 1058**

SD7H15 "C" Type only

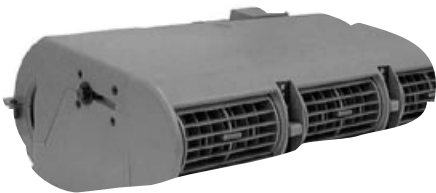
**EV 2222**

**Formula III 12V Dash type**

**EV 2239**

**Formula III 24V Dash type**

BTU's  
**13,700**  
K/Cal  
**3452**  
Air Flow  
**200 F<sup>3</sup>/min**  
Dimensions:  
**W-403mm**  
**D-325mm**  
**H-154mm**



**EV 2210**

**Formula Excel 12V Dash type**

**EV 2238**

**Formula Excel 24V Dash type**

BTU's  
**12,000**  
K/Cal  
**3024**  
Air Flow  
**180 F<sup>3</sup>/min**  
Dimensions:  
**W-400mm**  
**D-308mm**  
**H-146mm**



**CM 5855**

**Nissan X-Trail**

T30 Engine

**02 >**

